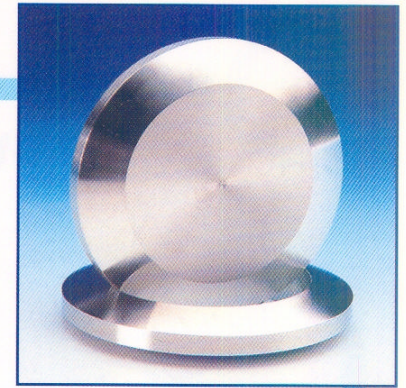


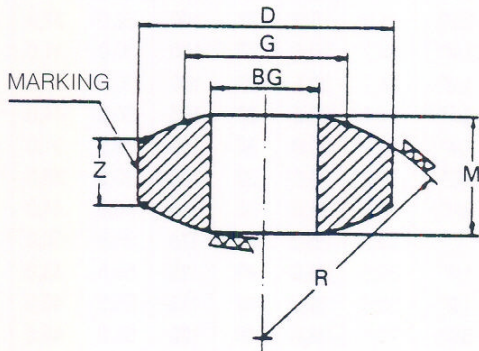


GUARNIZIONI LENTICOLARI

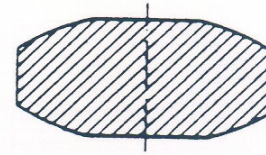
LENTICULAR GASKETS



GUARNIZIONE TIPO "A"
TYPE "A" GASKET



GUARNIZIONE TIPO "B"
TYPE "B" GASKET



DNP	BG $\begin{smallmatrix} +0,5 \\ -0 \end{smallmatrix}$	D	G	R	M	Z	MASS kg.	
							TYPE A	TYPE B
1/4"	6,0	15	8,7	12,7	9	7	0,010	0,013
1/2"	11,3	21	15,0	22,0	9	8	0,020	0,027
3/4"	14,7	27	20,5	30,0	10	7	0,025	0,040
1"	19,2	32	25,0	36,5	10	7	0,040	0,060
1" 1/2"	30,5	48	38,0	55,5	11	7	0,090	0,160
2"	39,3	56	46,5	68,0	11	6	0,100	0,200
3"	58,4	83	69,8	102,0	14	7	0,300	0,600
4"	77,2	108	91,0	133,0	18	9	0,600	1,300
6"	116,4	160	136,1	199,0	25	13	1,900	3,900
8"	153,1	212	175,8	257,0	30	16	3,500	3,000
10"	190,0	265	212,0	310,0	38	20	5,500	10,500

Dimensioni
Costruzione
Materiali e prove
Condizioni di progetto

Come indicato in tabella
Forgiata
Secondo SPC. G510/10
292 bar a 80°C - 258 bar a 150° C - 221 bar a 250° C.

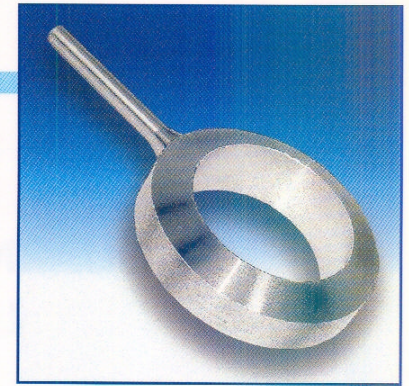
Dimensions
Construction
Material and tests
Design conditions

As shown
Forged
Per spc. g510. and as specified on P.O.
292 bars at 80°C - 258 bars at 150° C - 221 bars at 250° C.



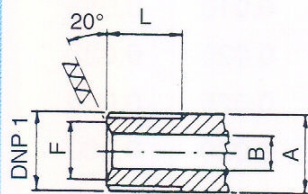
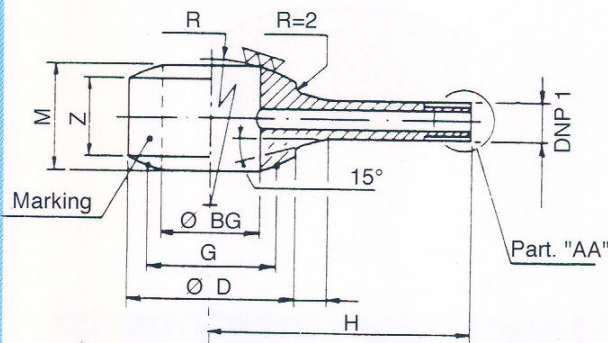
GUARNIZIONI LENTICOLARI CON UNA DERIVAZIONE

LENTICULAR GASKETS WITH ONE BRANCH



TIPO "A"
CON DERIVAZIONE FILETTATA
ANSI B 2.1 NPSM

TYPE "A"
WITH THREADED BRANCH
PER ANSI B 2.1 NPSM

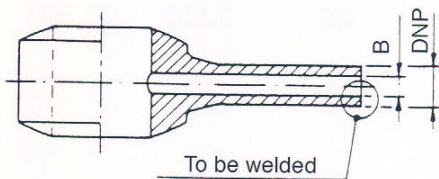


PART. "AA"

DNP 1	G	D	H	R
1/4"	13,7	6,0	10,5	40
1/2"	21,3	11,3	18,0	40
3/4"	26,7	14,7	22,0	40
1"	33,4	19,2	29,5	50

TIPO "B"
CON DERIVAZIONE
DA SALDARE DI TESTA

TYPE "B"
WITH BUTT-WELDING BRANCH



Dimensione ANSI B 31.3 - B 16.5

DNP	DNP 1	BG ^{+0,5} ₋₀	G	D	H	R	M	Z
1/4"	1/4"	6,0	8,7	15	40	12,7	31,0	29,0
1/2"	1/4"	11,3	15,0	21	100	22,0	31,0	28,0
1/2"	1/2"	11,3	15,0	21	100	22,0	37,5	35,0
3/4"	1/4"	14,7	20,5	27	100	30,0	31,0	27,0
3/4"	1/2"	14,7	20,5	27	100	30,0	37,5	34,0
3/4"	3/4"	14,7	20,5	27	105	30,0	44,0	41,0
1"	1/4"	19,2	25,0	32	100	36,5	31,0	27,0
1"	1/2"	19,2	25,0	32	100	36,5	38,0	34,0
1"	3/4"	19,2	25,0	32	110	36,5	44,0	40,0
1"	1"	19,2	25,0	32	115	36,5	50,0	47,0
1"	1/2"	30,5	38,0	48	115	55,5	33,0	29,0
1"	1/2"	30,5	38,0	48	115	55,5	40,0	36,0
1"	1/2"	30,5	38,0	48	120	55,5	45,5	41,5
1"	1/2"	30,5	38,0	48	130	55,5	52,0	48,0
2"	1/4"	39,3	46,5	56	125	68,0	33,0	28,0
2"	1/2"	39,3	46,5	56	125	68,0	40,0	35,0
2"	3/4"	39,3	46,5	56	130	68,0	46,0	41,0
2"	1"	39,3	46,5	56	140	68,0	53,0	48,0
3"	1/4"	58,4	69,8	83	150	102,0	36,0	29,0
3"	1/2"	58,4	69,8	83	150	102,0	43,0	36,5
3"	3/4"	58,4	69,8	83	155	102,0	49,0	42,5
3"	1"	58,4	69,8	83	165	102,0	55,5	49,0
4"	1/4"	77,2	91,0	108	175	133,0	39,0	30,0
4"	1/2"	77,2	91,0	108	175	133,0	46,0	37,0
4"	3/4"	77,2	91,0	108	180	133,0	53,0	44,0
4"	1"	77,2	91,0	108	190	133,0	59,0	50,0
6"	1/4"	116,4	135,1	160	215	199,0	43,0	32,0
6"	1/2"	116,4	135,1	160	215	199,0	50,0	38,0
6"	3/4"	116,4	135,1	160	220	199,0	56,0	44,5
6"	1"	116,4	135,1	160	230	199,0	62,0	50,5
8"	1/4"	153,1	175,8	212	255	257,0	51,0	37,0
8"	1/2"	153,1	175,8	212	255	257,0	58,0	43,0
8"	3/4"	153,1	175,8	212	260	257,0	64,0	50,0
8"	1"	153,1	175,8	212	270	257,0	70,0	56,0
10"	1/4"	190,0	212,0	265	290	310,0	55,0	37,0
10"	1/2"	190,0	212,0	265	290	310,0	62,6	44,6
10"	3/4"	190,0	212,0	265	295	310,0	68,0	50,0
10"	1"	190,0	212,0	265	305	310,0	74,7	56,7

Dimensioni
Costruzione

Estremità Filettata
Da saldare

Materiali e prove
Condizioni di progetto

ANSI B 36.19 e come indicato in tabella
Forgiata

ANSI B 2.1 NPSM
Liscia o piana

Secondo SPC. G510/10
292 bar a 80°C - 258 bar a 150°C
221 bar a 250°C.

Dimensions
Construction

End Threaded
SW

Materials and tests
Design conditions

ANSI B 36.19 AND AS SHOWN
Forged

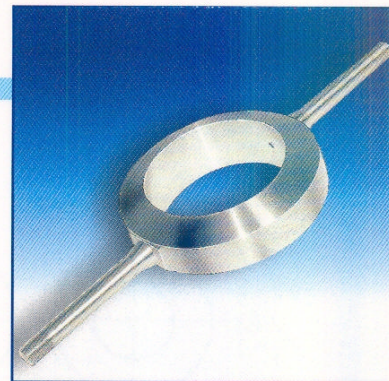
ANSI B 2.1 NPSM
Smooth or plain

According to SPC. G510/10
292 bar a 80°C - 258 bar a 150°C
221 bar a 250°C.



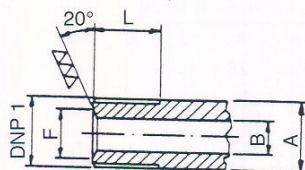
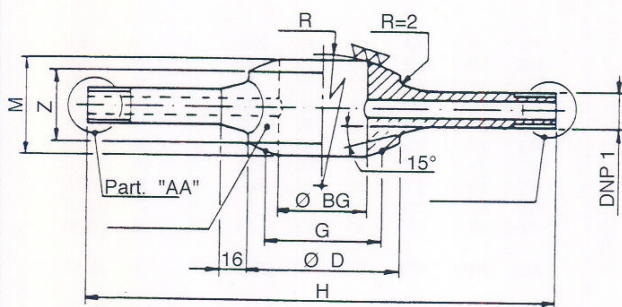
GUARNIZIONI LENTICOLARI CON DUE DERIVAZIONE

LENTICULAR GASKETS WITH TWO BRANCHES



TIPO "A"
CON DERIVAZIONI FILETTATE
ANSI B 2.1 BPSM

TYPE "A"
WITH THREADED BRANCHES
PER ANSI B 2.1 NPSM

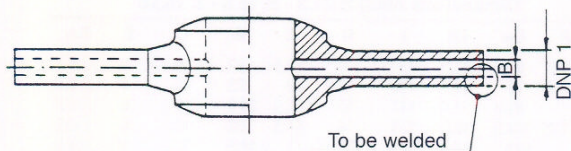


PART. "AA"

DNP 1	G	D	H	R
1/4"	13,7	6,0	10,5	40
1/2"	21,3	11,3	18,0	40
3/4"	26,7	14,7	22,0	40
1"	33,4	19,2	29,5	50

TIPO "B"
CON DERIVAZIONE
DA SILDARE DI TESTA

TYPE "B"
WITH BUTT-WELDING BRANCH



Dimensione ANSI B 31.3 - B 16.5

DNP	DNP 1	BG ^{+0,5} ₀	G	D	H	R	M	Z
1/4"	1/4"	6,0	8,7	15	180	12,7	31,0	29,0
1/2"	1/4"	11,3	15,0	21	195	22,0	31,0	28,0
1/2"	1/2"	11,3	15,0	21	195	22,0	37,5	35,0
3/4"	1/4"	14,7	20,5	27	200	30,0	36,0	27,0
3/4"	1/2"	14,7	20,5	27	200	30,0	37,5	34,0
3/4"	3/4"	14,7	20,5	27	210	30,0	44,0	41,0
1"	1/4"	19,2	25,0	32	205	36,5	31,0	27,0
1"	1/2"	19,2	25,0	32	205	36,5	38,0	34,0
1"	3/4"	19,2	25,0	32	215	36,5	44,0	40,0
1"	1"	19,2	25,0	32	235	36,5	50,0	47,0
1" 1/2"	1/4"	30,5	38,0	48	235	55,5	35,0	29,0
1" 1/2"	1/2"	30,5	38,0	48	235	55,5	40,0	36,0
1" 1/2"	3/4"	30,5	38,0	48	245	55,5	45,5	41,5
1" 1/2"	1"	30,5	38,0	48	265	55,5	52,0	48,0
2"	1/4"	39,3	46,5	56	255	68,0	33,0	28,0
2"	1/2"	39,3	46,5	56	255	68,0	40,0	35,0
2"	3/4"	39,3	46,5	56	265	68,0	46,0	41,0
2"	1"	39,3	46,5	56	285	68,0	53,0	48,0
3"	1/4"	58,4	69,8	83	300	102,0	36,0	29,0
3"	1/2"	58,4	69,8	83	300	102,0	43,0	36,5
3"	3/4"	58,4	69,8	83	310	102,0	49,0	42,5
3"	1"	58,4	69,8	83	360	102,0	55,5	49,0
4"	1/4"	77,2	91,0	108	350	133,0	39,0	30,0
4"	1/2"	77,2	91,0	108	350	133,0	46,0	37,0
4"	3/4"	77,2	91,0	108	360	133,0	53,0	44,0
4"	1"	77,2	91,0	108	380	133,0	59,0	50,0
6"	1/4"	116,4	135,1	160	430	199,0	43,0	32,0
6"	1/2"	116,4	135,1	160	430	199,0	50,0	38,0
6"	3/4"	116,4	135,1	160	440	199,0	56,0	44,5
6"	1"	116,4	135,1	160	460	199,0	62,0	50,5
8"	1/4"	153,1	175,8	212	510	257,0	51,0	37,0
8"	1/2"	153,1	175,8	212	510	257,0	58,0	43,0
8"	3/4"	153,1	175,8	212	520	257,0	64,0	50,0
8"	1"	153,1	175,8	212	540	257,0	70,0	56,0
10"	1/4"	190,0	212,0	265	580	310,0	55,0	37,0
10"	1/2"	190,0	212,0	265	580	310,0	62,6	44,6
10"	3/4"	190,0	212,0	265	590	310,0	68,0	50,0
10"	1"	190,0	212,0	265	610	310	74,7	36,7

Dimensioni
Costruzione

Estremità Filettata
Da saldare

Materiali e prove

Condizioni di progetto

ANSI B 36.19 e come indicato in tabella
Forgiata

ANSI B 2.1 NPSM
Liscia o piana

Secondo SPC. G510/10

292 bar a 80°C - 258 bar a 150°C
221 bar a 250°C.

Dimensions
Construction

End Threaded
SW

Materials and tests

Design conditions

ANSI B 36.19 AND AS SHOWN
Forged

ANSI B 2.1 NPSM
Smooth or plain

According to SPC. G510/10

292 bar a 80°C - 258 bar a 150°C
221 bar a 250°C.